

Experience the Power of Intelligence in Teaching & Learning



An Advanced AI Digital Board Designed to Transform the Teaching Experience.



Powered by a high-performance octa-core processor.



Patented Optical Touch Technology for superior real-time writing experience.



Infinite Canvas: Add unlimited content to support dynamic teaching sessions.



BrightClass AI Suite: Includes AI Whiteboard tools and content creation tools

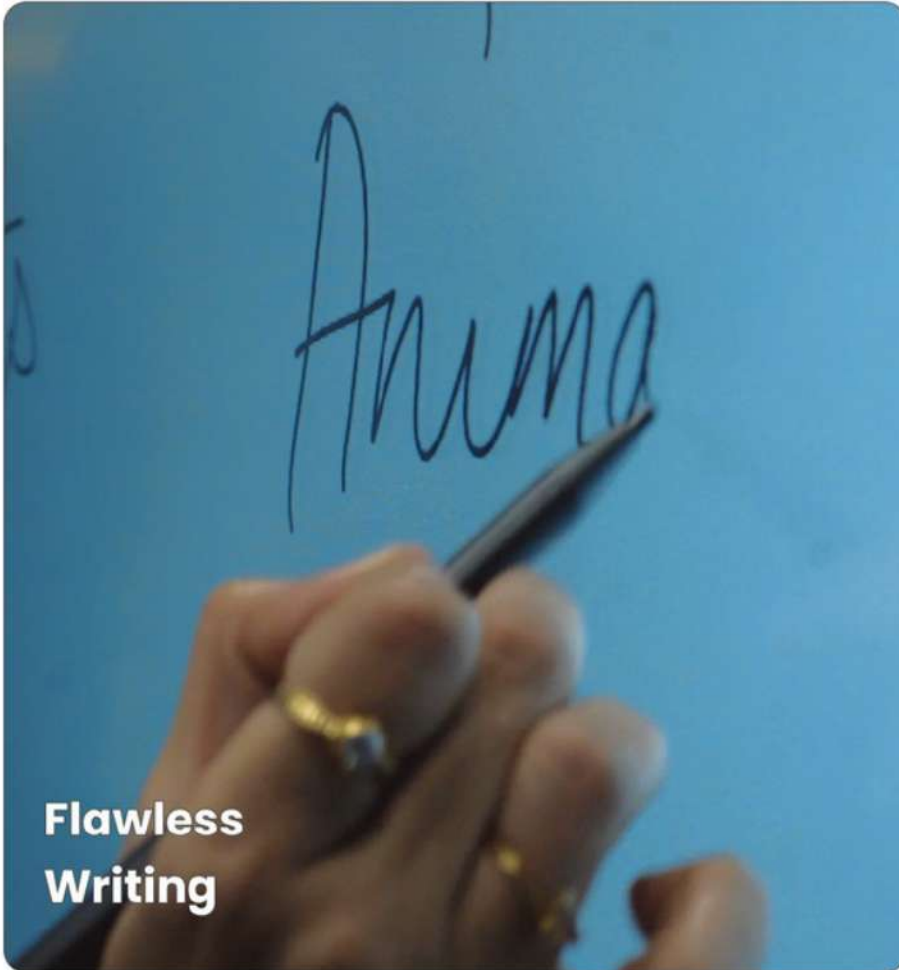
Pearl White



Space Grey



Hardware Features



**Flawless
Writing**

Silky Smooth Writing Experience

The AI digital board has the most advanced Optical Touch technology to deliver a zero lag and jitter free ultra smooth writing experience.



4K UHD
with 450 nits
brightness

Digital Board with Extra Brightness

A 4K ultra-HD display on an interactive flat panel can offer more detailed images, even in brightly-lit classrooms.



**8- CORE
ARM GPU**

Power up Teaching with a Powerful Processor

The AI digital board has the most advanced Optical Touch technology to deliver a zero lag and jitter free ultra smooth writing experience.

20W

Dual speakers
with boosted
audio



Stereo Sound Output

Two front-facing 20 W speakers merged into the panel provide a super-rich, boosted audio experience in broader classrooms.

Enhanced User Interface with Android OS 14

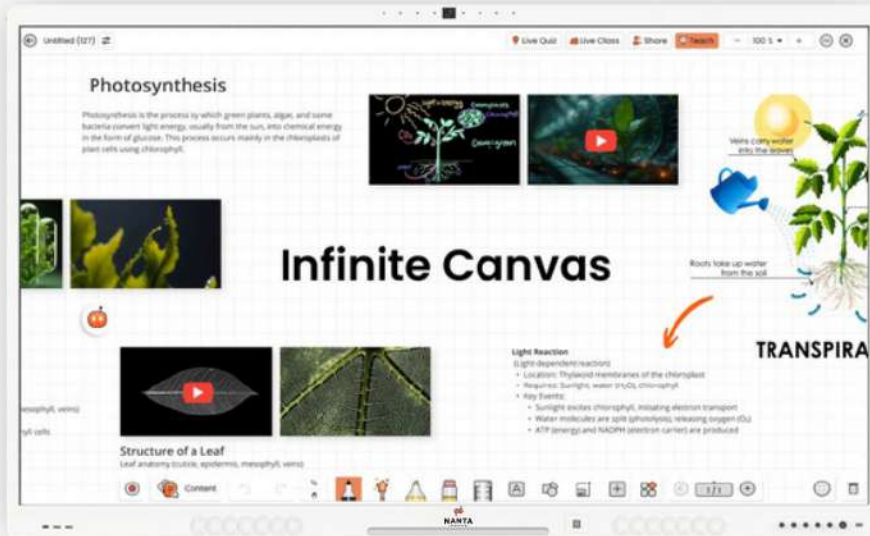
Experience swift performance and easy operation while teaching on the digital board with the friendly interface and customisation options.

Android 14



Advanced Whiteboard for teachers

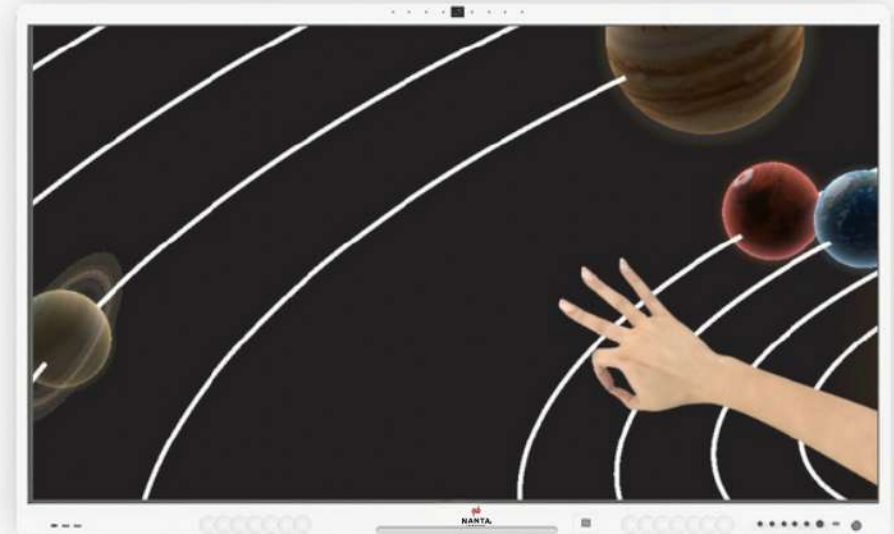
Infinite whiteboards are powerful tools designed to enhance teaching and learning experiences. They offer an expansive canvas that allows teachers to add unlimited content and scroll seamlessly to any part of the board as needed. This flexibility is particularly beneficial for educators who need to cover extensive material or engage in dynamic, interactive lessons.

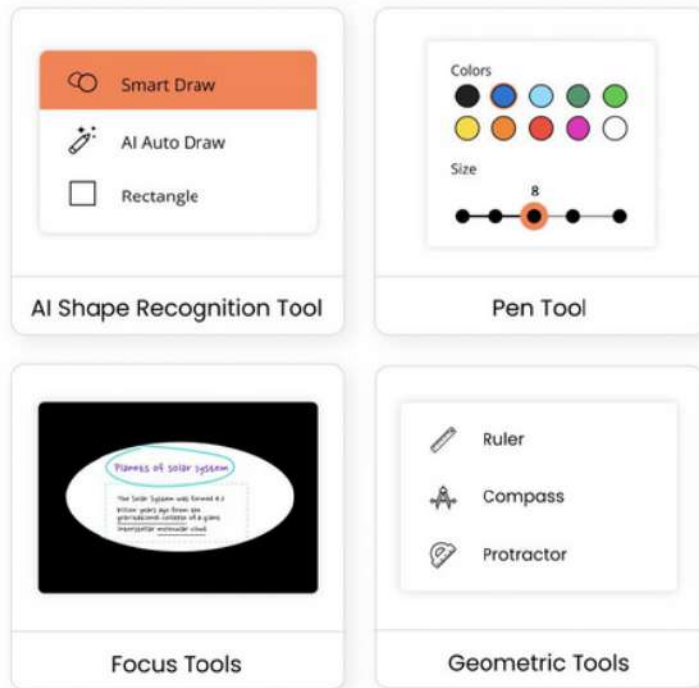


Unlimited Content Addition Endless Space: Teachers can add as much content as needed without worrying about running out of space.

Seamless Scrolling

Pan and Zoom: Infinite whiteboards allow teachers to zoom in and out, and pan seamlessly across the canvas, making it easy to navigate through extensive content.



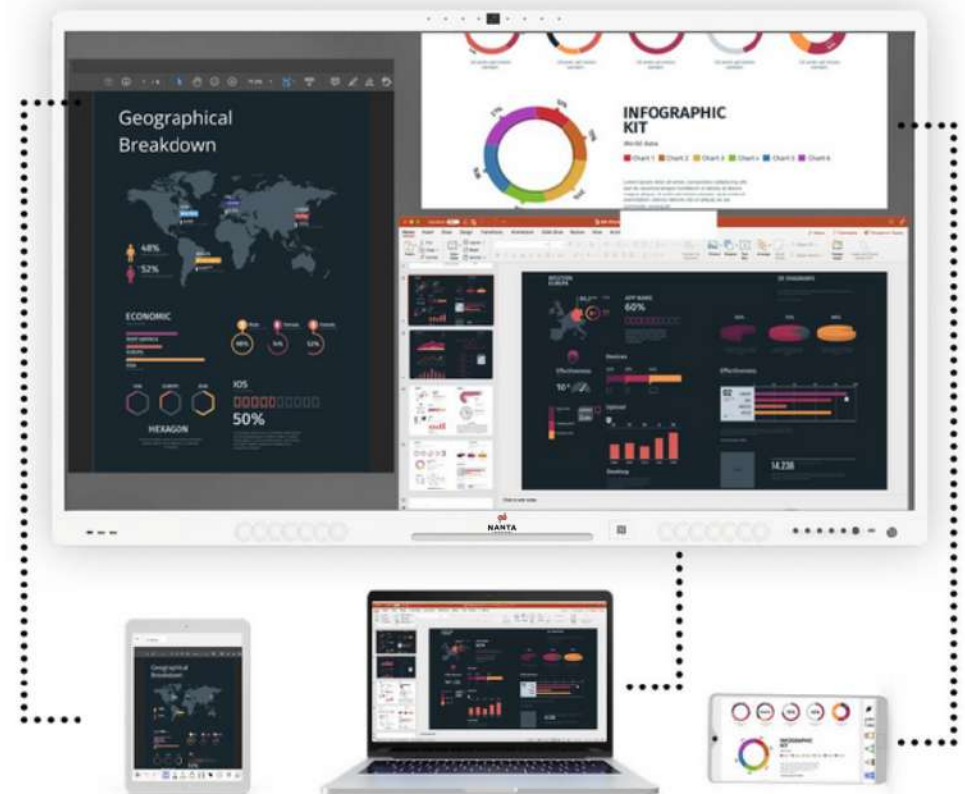


Versatile Drawing Tools:

From freehand sketches to geometric shapes, teachers can express their ideas with precision.

Multi-Device Support:

Accessible on computers, tablets, and smartphones, ensuring flexibility and convenience



Insights for Principals, Administrators & Management

i: Principal App for Monitoring

The AI Digital board, connected with an AI Vision Camera, revolutionizes classroom monitoring by providing administrators with a comprehensive view of classroom activities.



Live Classroom Streaming:

Get a real-time view of classrooms directly from the admin portal, enabling management to monitor activities without leaving their offices.



Student Behavior Insights:

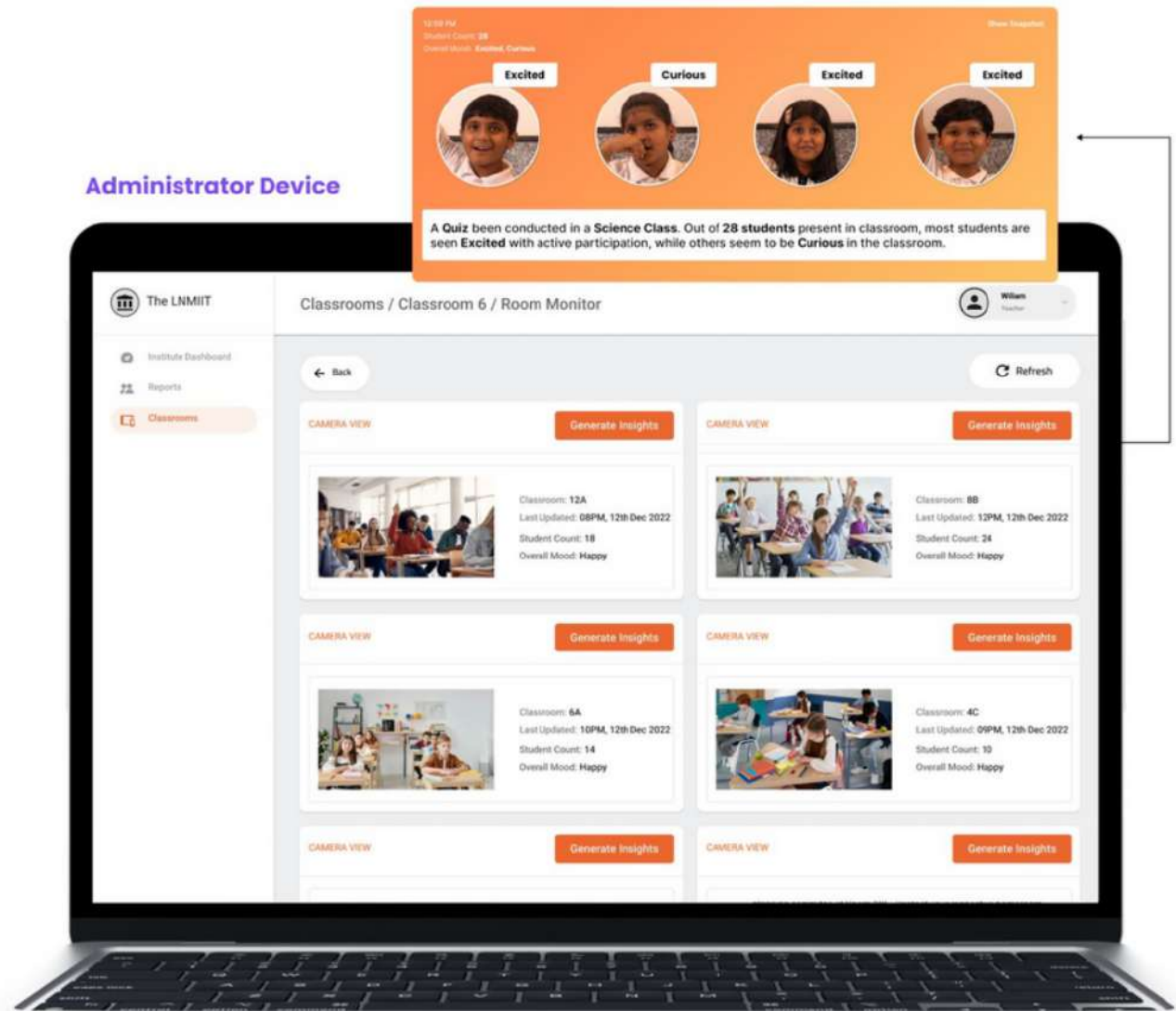
Frequent snapshots are taken to analyze student engagement, classroom dynamics, and overall behavior patterns. These insights allow for timely actions to improve teaching quality and engagement.



Display Monitoring:

Admins can view the classroom display and its content in real time, ensuring that lessons align with curriculum standards and teaching objectives.

Administrator Device



ii: Device Management

Seamlessly manage all classroom displays and devices through a centralized portal, ensuring operational efficiency across the institution.



Centralized Control:

IT teams and administrators can control all displays, including turning them on or off and monitoring their utilization, from a single portal.



Class Announcements:

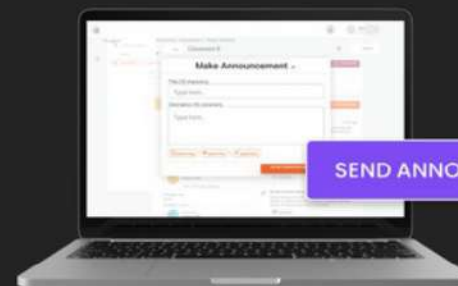
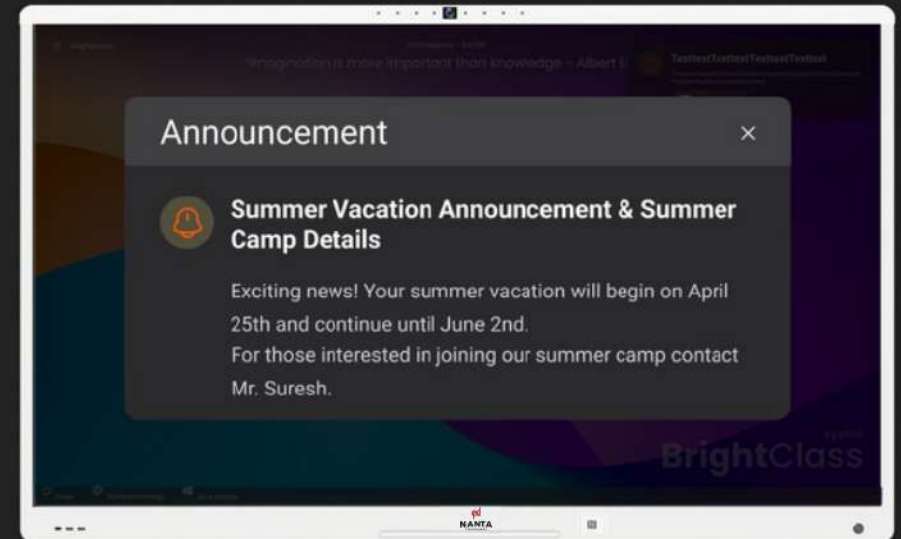
Flash important announcements in classrooms in the form of images, audio, or video. Keep students and staff informed in real time.



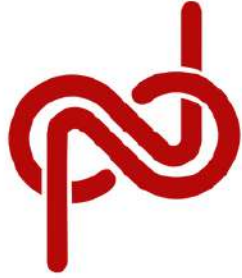
Performance Optimization:

Track device usage to identify underutilized or overutilized resources, helping optimize operations and resource allocation.

Classroom Device



Administrator Device



NANTA
TECHNOLOGY

For AI-ready Learning Spaces

